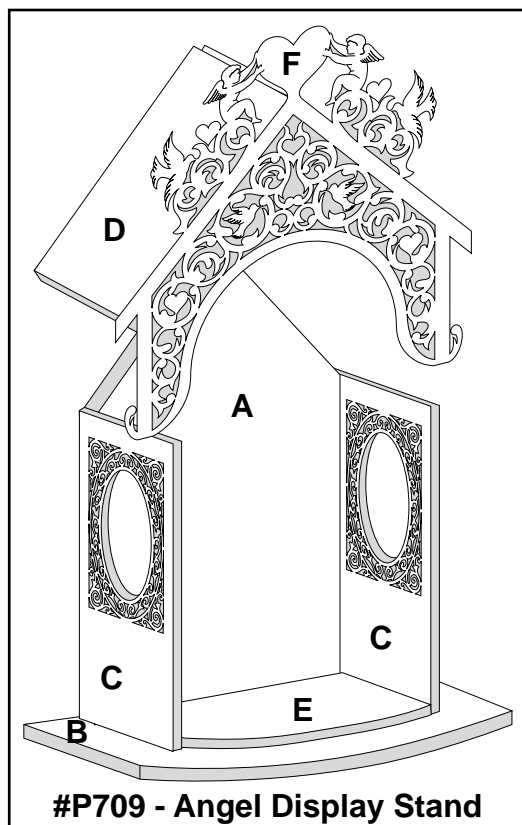




#P709 - Angel Display Stand

What an attractive piece to display your favorite collectible with! 15" high.



GREAT AMERICAN SCROLLSAW DOWNLOADABLE PATTERNS™



The Berry Basket © Copyright 2002 • All Rights Reserved
www.greatamericanscrollsaw.com • a division of The Berry Basket

mir-izdeliy.at.ua

#P709 - Angel Display Stand			
Description	Item	Qty	Size
Back	A	1	1/4" T x 10" W x 15" L
Base	B	1	1/4" T x 6 1/4" W x 12 3/4" L
Side	C	2	1/4" T x 4 3/4" W x 10" L
Roof	D	2	1/4" T x 4 3/4" W x 8 1/4" L
Bottom	E	1	1/4" T x 5 3/4" W x 10" L
Crest	F	1	1/4" T x 12" W x 12 1/4" L

#P709 - Assembly Instructions

1. Select your material from a variety of hardwoods or solid core plywood.
2. Measure each pattern piece and cut the work pieces to size accordingly. Sand as necessary.
3. Make all pattern pieces by adhering the paper patterns to the work pieces with a repositionable spray adhesive. Cut the outer shapes and any interior designs. And drill where indicated.
4. Remove all paper patterns. Sand where needed. The edges can be rounded by sanding or using a small roundover router bit if desired.
5. Assemble by first attaching the Back to one Side, then attach the Bottom to the same Side. Next, attach the remaining Side. Now, attach this assembly to the Base, securing with glue and wire brads. Then, attach the Roof, and Crest, and finish as desired.

Pattern overlap line

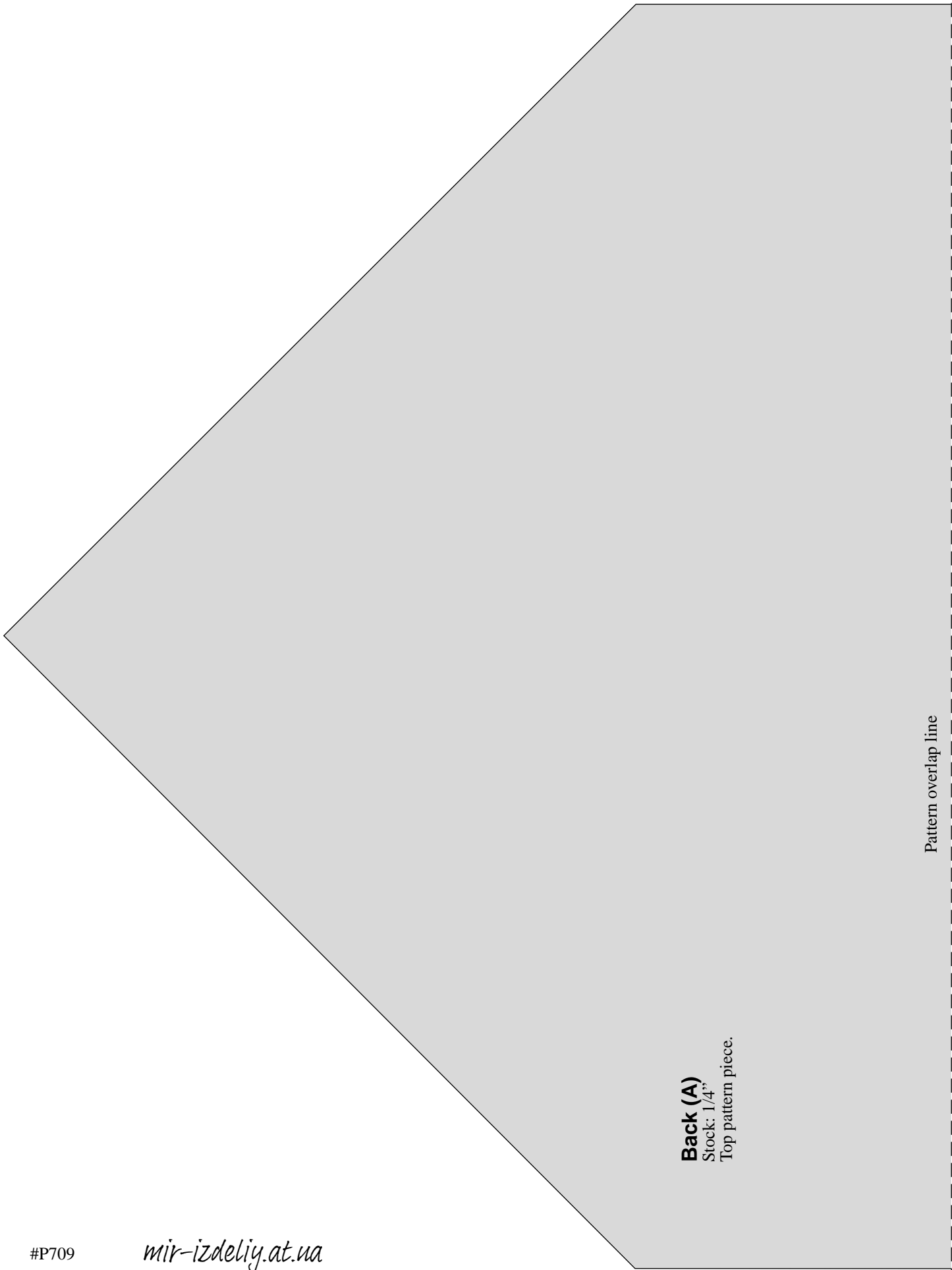
Back (A)

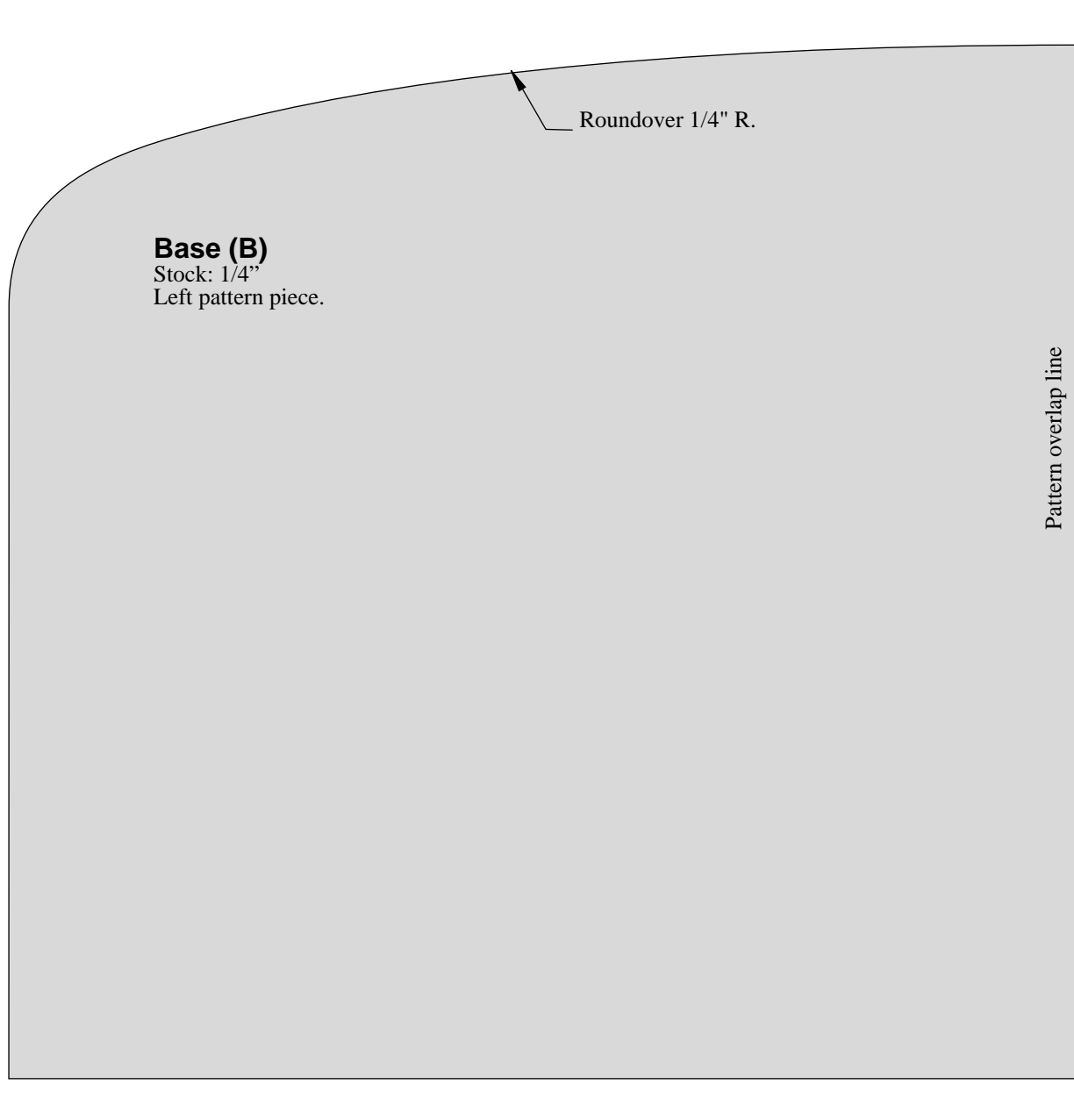
Stock: 1/4"

Bottom pattern piece.

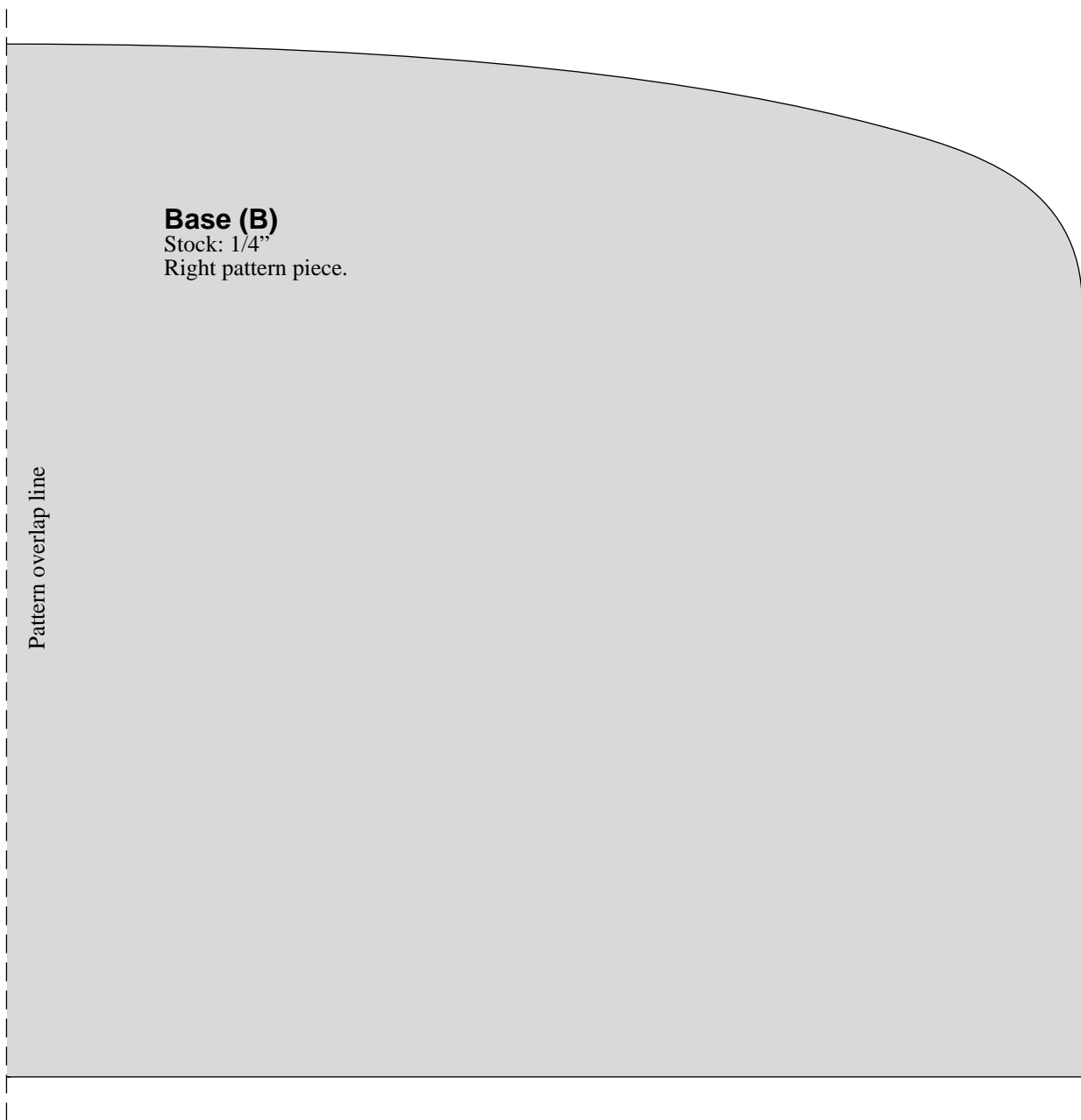
mir-izdeliy.at.ua

#P709





mir-izdeliy.at.ua



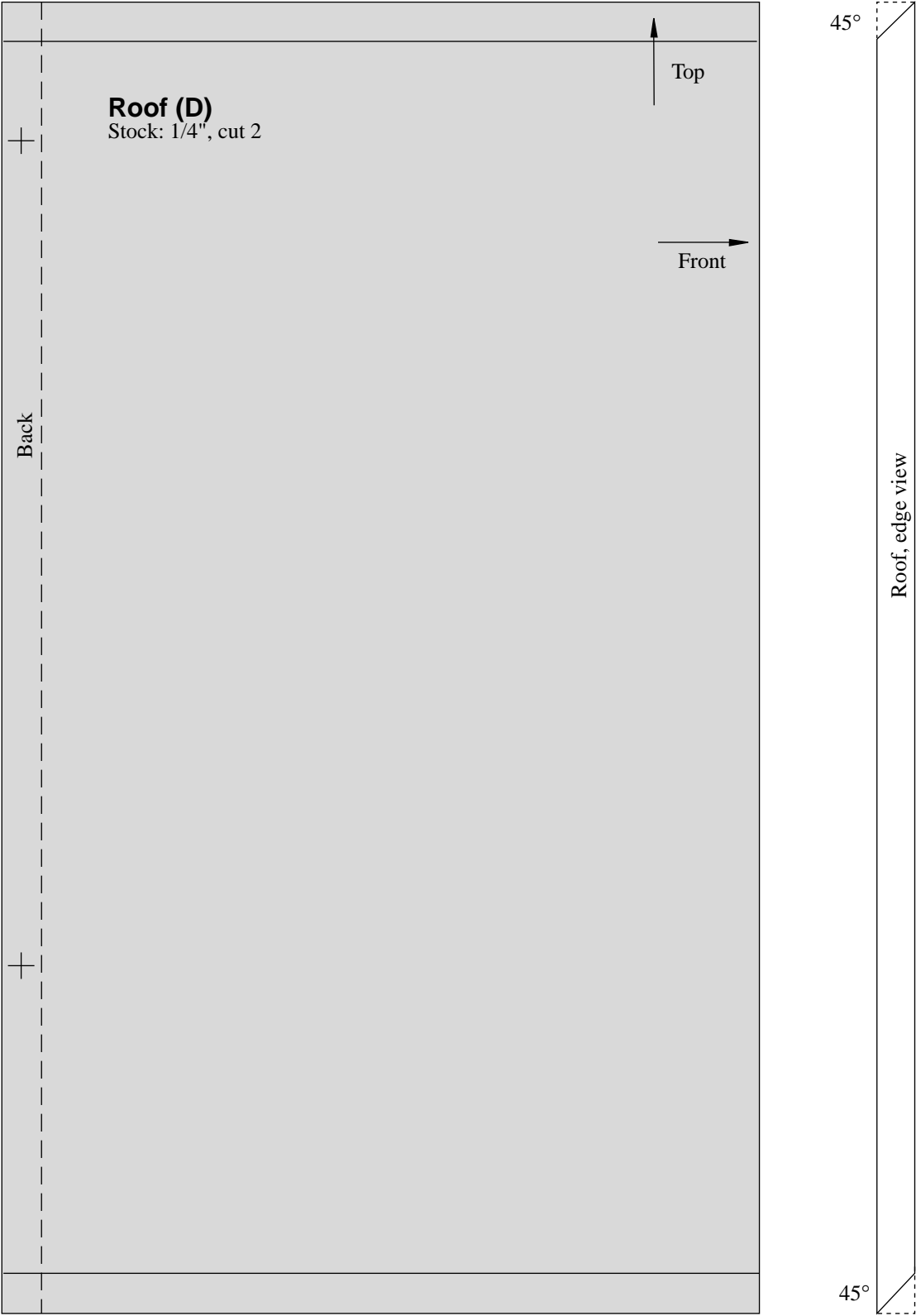
mir-izdeliy.at.ua



Side (C)
Stock: 1/4", cut 2

Attach Bottom and Back to
Sides with glue and #18 x 5/8"
wire brads.

Option: Use a 3/8" diam. x 4 3/4" long dowel instead of making the 45° bevel cut.



Bottom (E)

Stock: 1/4"

Center Bottom on Base from side to side and 1/4" from the Back of the Base. Glue and nail into position.

Roundover 1/4" R

mir-izdeliy.at.ua

