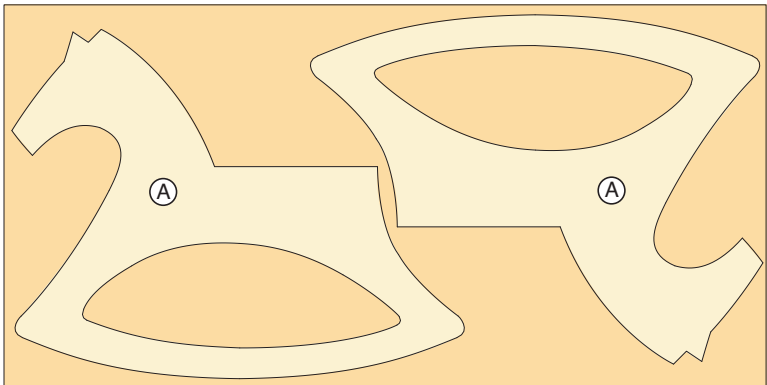


ONE ROCKIN' HORSE

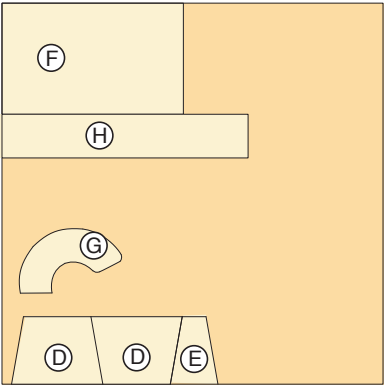
MATERIALS LIST

		FINISHED SIZE				
Part		T	W	L	Material	Pcs
A	sides	3/4"	22"	28 ¹ / ₂ "	BP	2
B	body support cleats	3/4"	3/4"	3 ³ / ₄ "	M	6
C	seat cleats	3/4"	3/4"	8 ¹ / ₄ "	M	1
D	body wedge block	3/4"	4 ¹ / ₄ "	5 ³ / ₄ "	BP	2
E	head wedge block	3/4"	4 ¹ / ₄ "	3"	BP	1
F	seat	3/4"	7"	11 ¹ / ₂ "	BP	1
G	tail	3/4"	3"	6"	BP	1
H	footrest	3/4"	2 ³ / ₄ "	15 ¹ / ₂ "	BP	1
I	saddle	1/4"	8"	9"	BP	2
J	handles	3/4"-diameter		3 ³ / ₈ "	Dowel	2
Materials Key: BP-Birch plywood, M-molding						

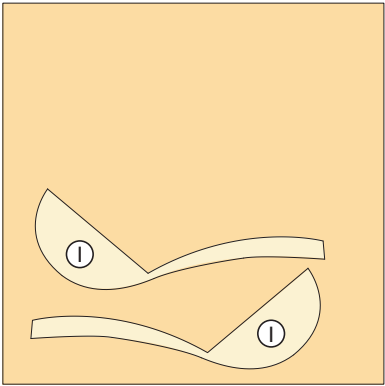
CUTTING DIAGRAM



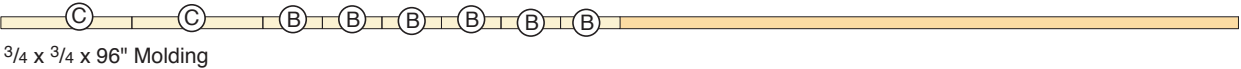
3/4 x 24 x 48" Baltic birch plywood



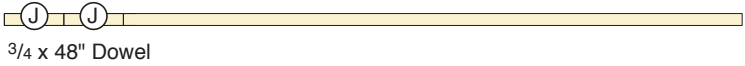
3/4 x 24 x 24" Baltic birch plywood



1/4 x 24 x 24" Baltic birch plywood



3/4 x 3/4 x 96" Molding



3/4 x 48" Dowel