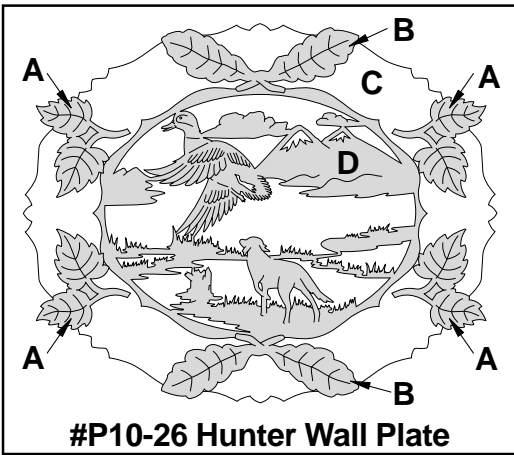




#P10-26 Hunter Wall Plate

Capture the great outdoors with our wildlife plate project. 13”L.



#P10-26 Hunter Wall Plate

GREAT AMERICAN SCROLLSAW



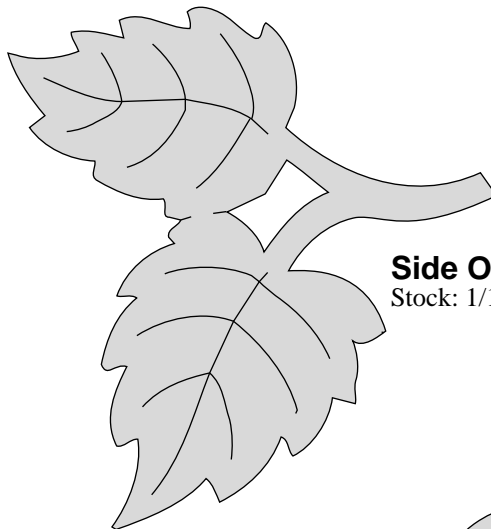
DOWNLOADABLE PATTERNS™

The Berry Basket © Copyright 2002 • All Rights Reserved
www.greatamericanscrollsaw.com • a division of The Berry Basket

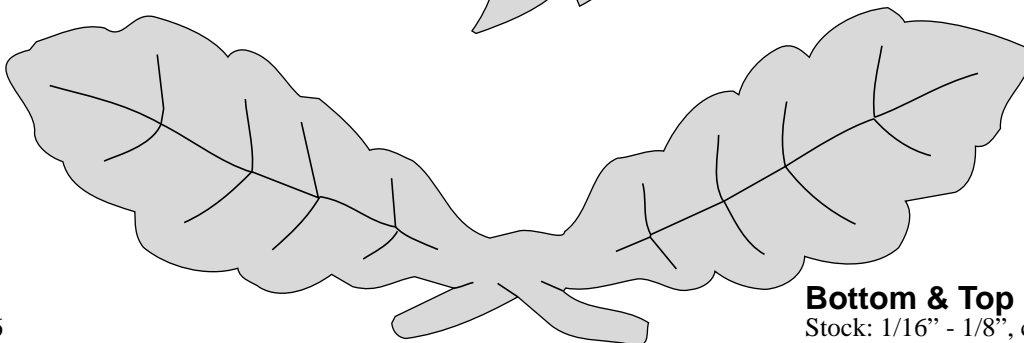
#P10-26 Hunter Wall Plate				
Description	Item	Qty	Size	
Side Overlay	A	4	1/16" - 1/8" T x 2 3/4" W x 3" L	
Bottom & Top Overlay	B	2	1/16" - 1/8" T x 2" W x 5 5/8" L	
Rim	C	1	1/8" - 1/4" T x 10 3/8" W x 13" L	
Interior Plate Design	D	1	1/4" - 3/8" T x 7 3/4" W x 9 3/4" L	

#P10-26 Assembly Instructions

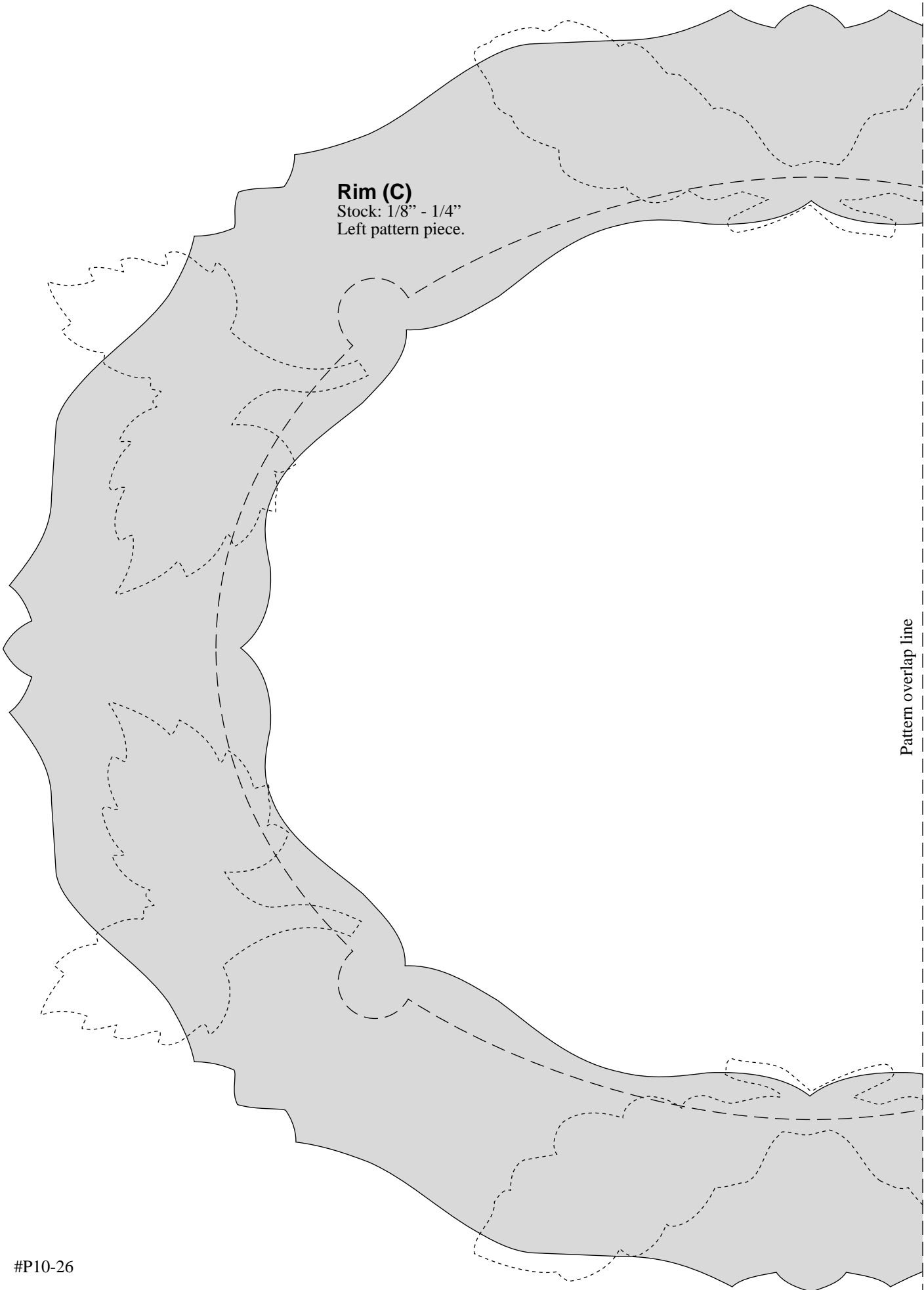
1. Select your material from a variety of hardwoods or solid core plywood.
2. Measure each pattern piece and cut the work pieces to size accordingly. Sand as necessary.
3. Make all pattern pieces by adhering the paper patterns to the work pieces with a repositionable spray adhesive. Cut the outer shapes and any interior designs. And drill where indicated.
4. Remove all paper patterns. Sand where needed. The edges can be rounded by sanding or using a small roundover router bit if desired.
5. Assemble by first attaching the Interior Plate Design to the backside of the Rim, securing with glue. Then attach the Overlays, and finish as desired.



Side Overlay (A)
Stock: 1/16" - 1/8", cut 4



Bottom & Top Overlay (B)
Stock: 1/16" - 1/8", cut 2

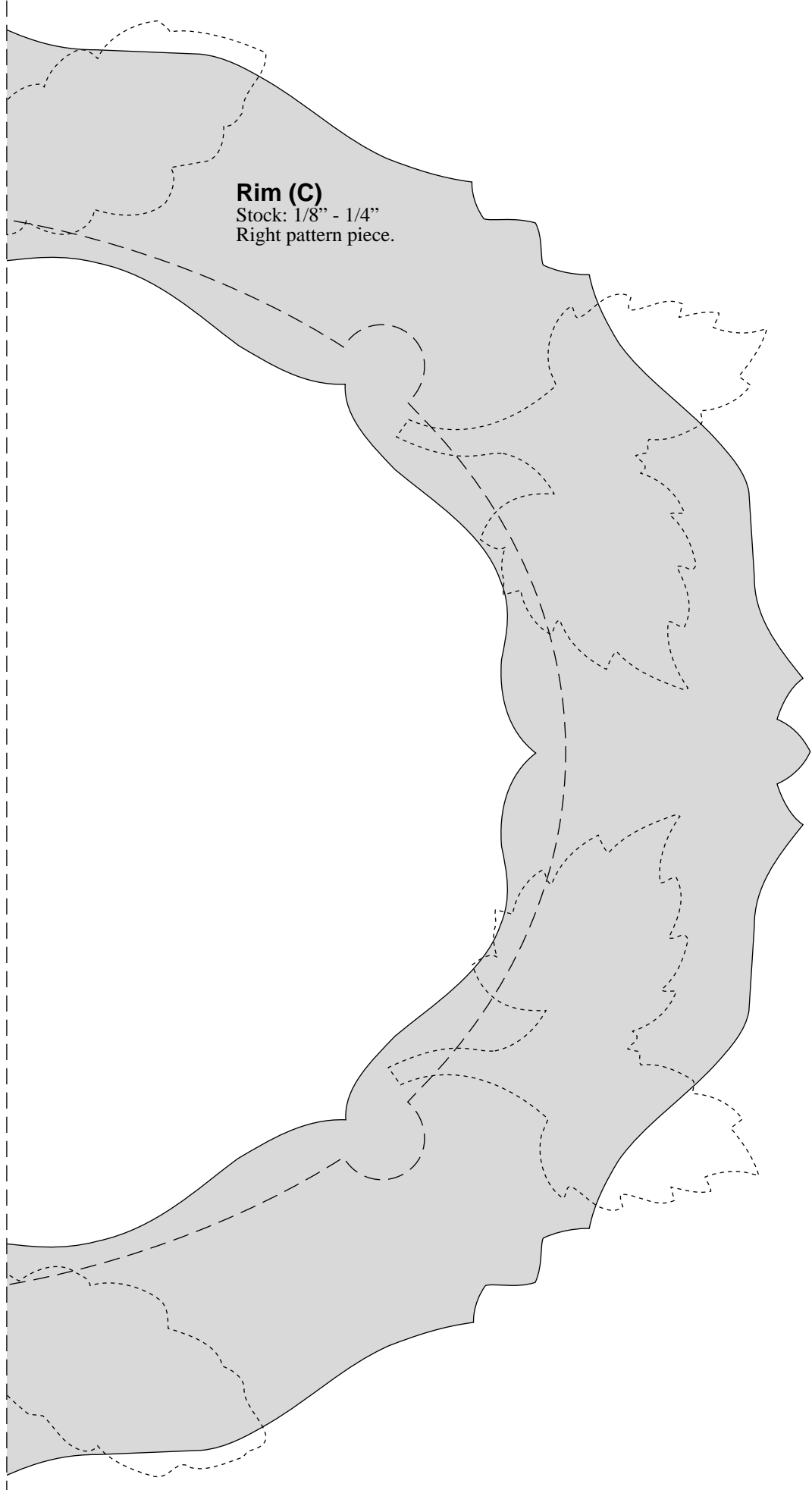


Rim (C)
Stock: 1/8" - 1/4"
Left pattern piece.

Pattern overlap line

Pattern overlap line

Rim (C)
Stock: 1/8" - 1/4"
Right pattern piece.





Interior Plate Design (D)

Stock: 1/4" - 3/8"
Attach to backside of Rim with glue.