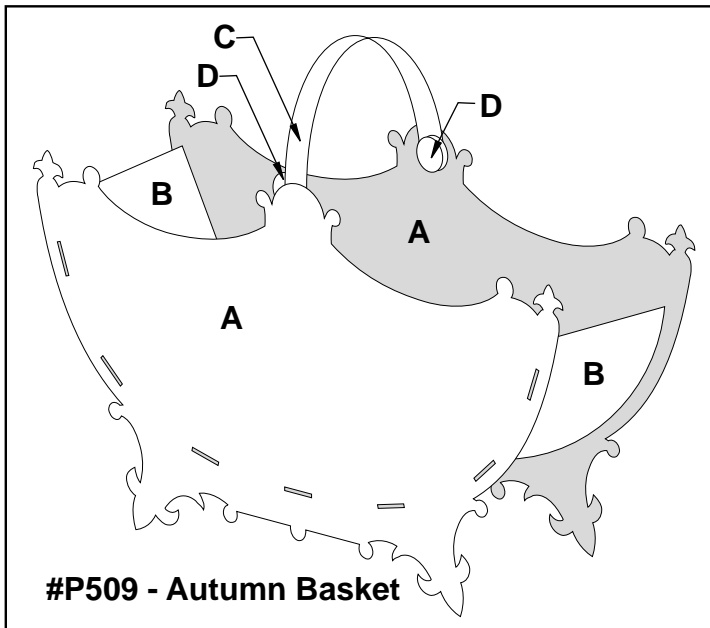




### **P509 - Autumn Basket**

With an intricate autumn design, our mini-fretwork basket is sure to compliment any decor. For a great gift idea fill with dried flowers or goodies. 16" wide.

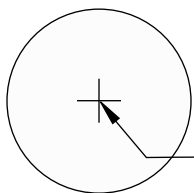


#P509 - Autumn Basket

#P509 - Autumn Basket			
Description	Item	Qty	Size
Side	A	2	1/4" T x 9 1/4" W x 15 1/2" L
Bottom	B	1	1/16" T x 8" W x 21 7/8" L
Handle	C	1	1/16" T x 3" W x 18" L
Cover	D	2	1/4" T x 1 1/8" W x 1 1/8" L

**#P509 Autumn Basket Instructions**

1. Select your material from a variety of hardwoods or solid core plywood.
2. Measure each pattern piece and cut the work pieces to size accordingly. Sand as necessary.
3. Make all pattern pieces by adhering the paper patterns to the work pieces with a repositionable spray adhesive. Cut the outer shapes and any interior designs. And drill where indicated.
4. Remove all paper patterns. Sand where needed. The edges can be rounded by sanding or using a small roundover router bit if desired.
5. Assemble by first attaching the Bottom to one Side. Secure with glue. Then attach the remaining Side. Finally, attach the Handle and Covers and finish as desired.



**Cover (D)**  
 Stock: 1/4"

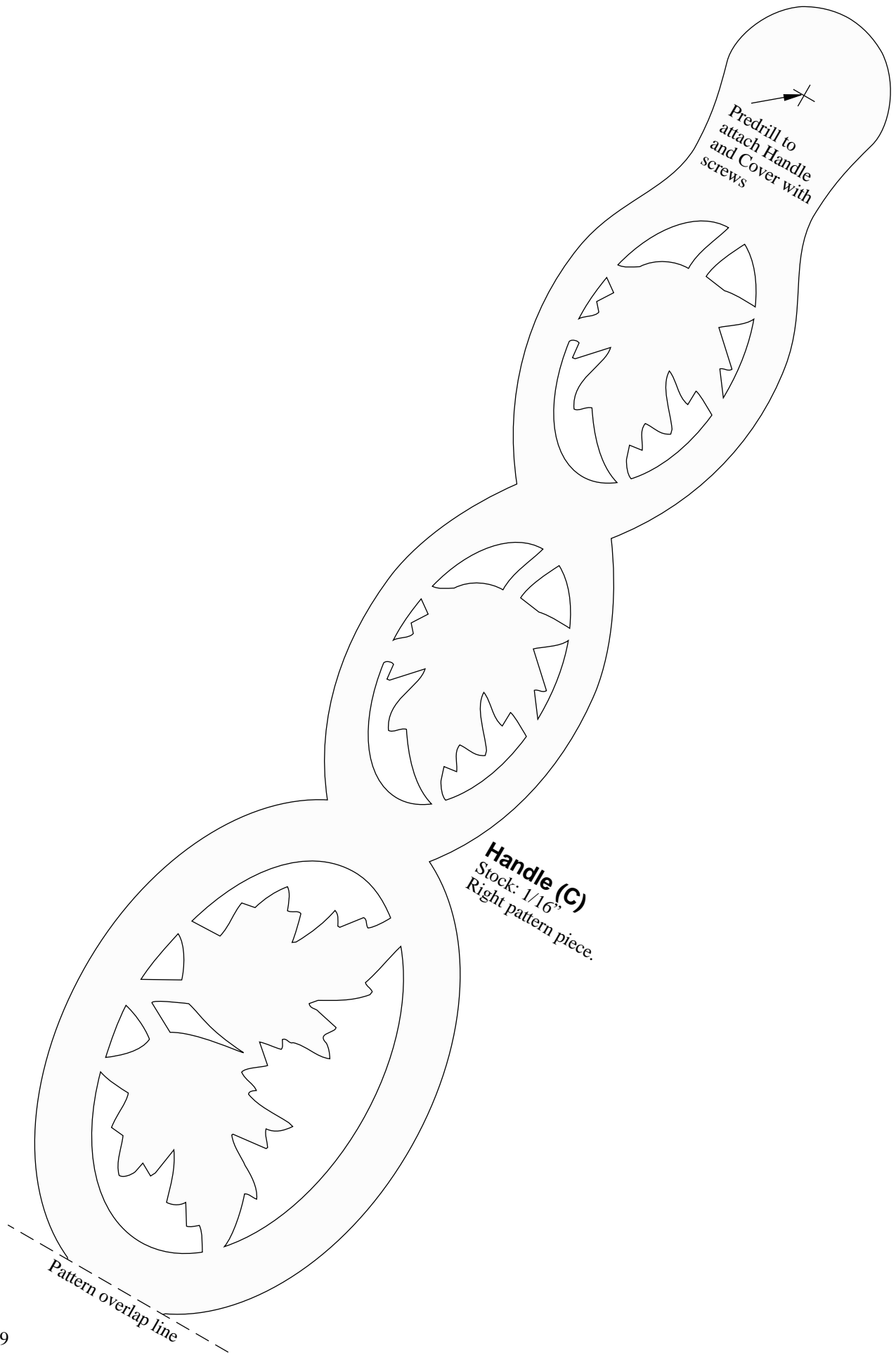
Predrill for a #4 x 1/2" roundhead wood screw to attach to inside of handle.

Predrill to attach Handle and Cover with screws

**Handle (C)**  
 Stock: 1/16"  
 Left pattern piece.



Pattern overlap line



Predrill to  
attach Handle  
and Cover with  
screws

**Handle (C)**  
Stock: 1/16"  
Right pattern piece.

Pattern overlap line



**Side (A)**

Stock: 1/4", cut 2

Left pattern piece.

Pattern overlap line

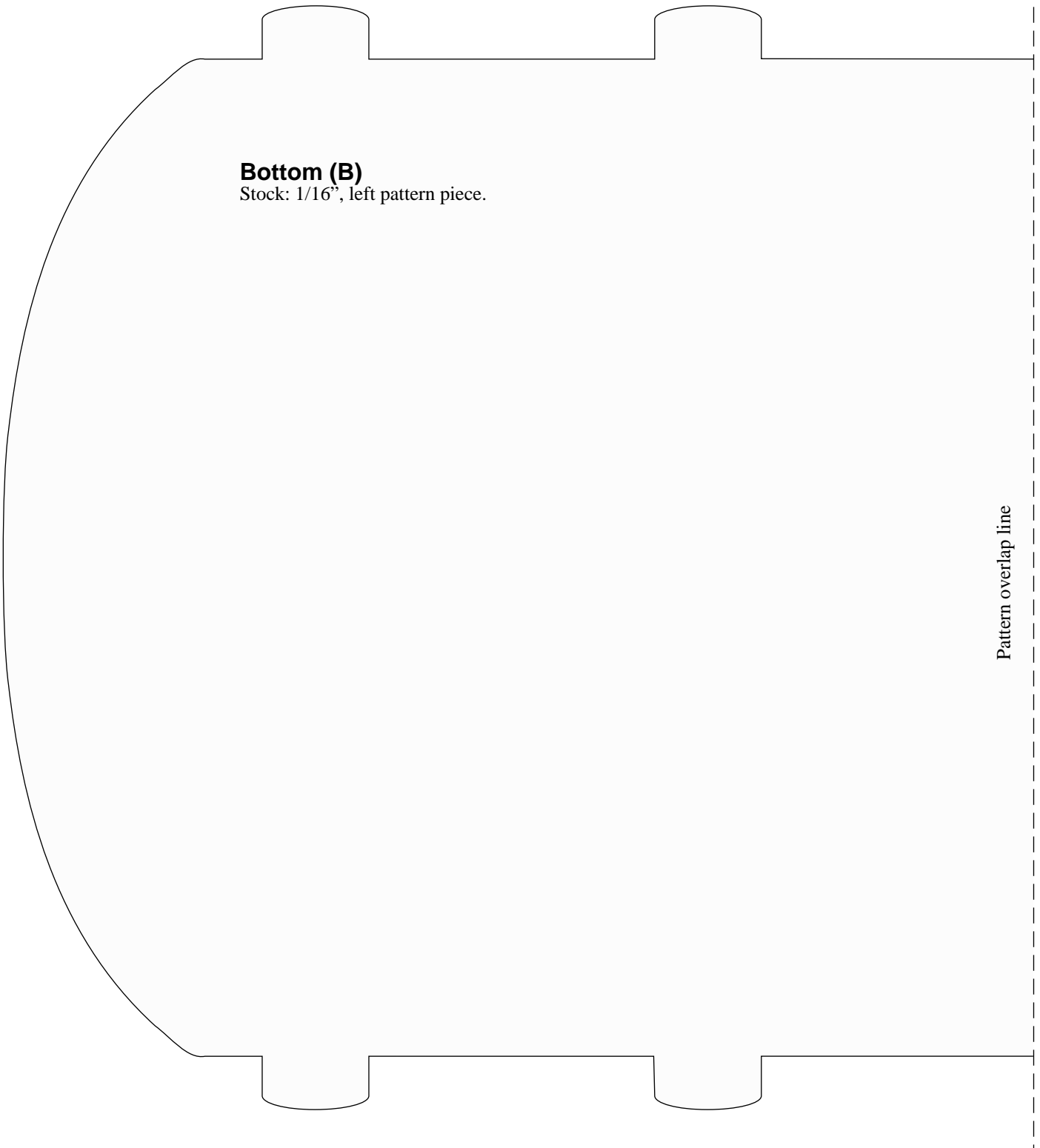
Predrill to attach  
Handle and Cover  
with screws

**Side (A)**  
Stock: 1/4", cut 2  
Right pattern piece.



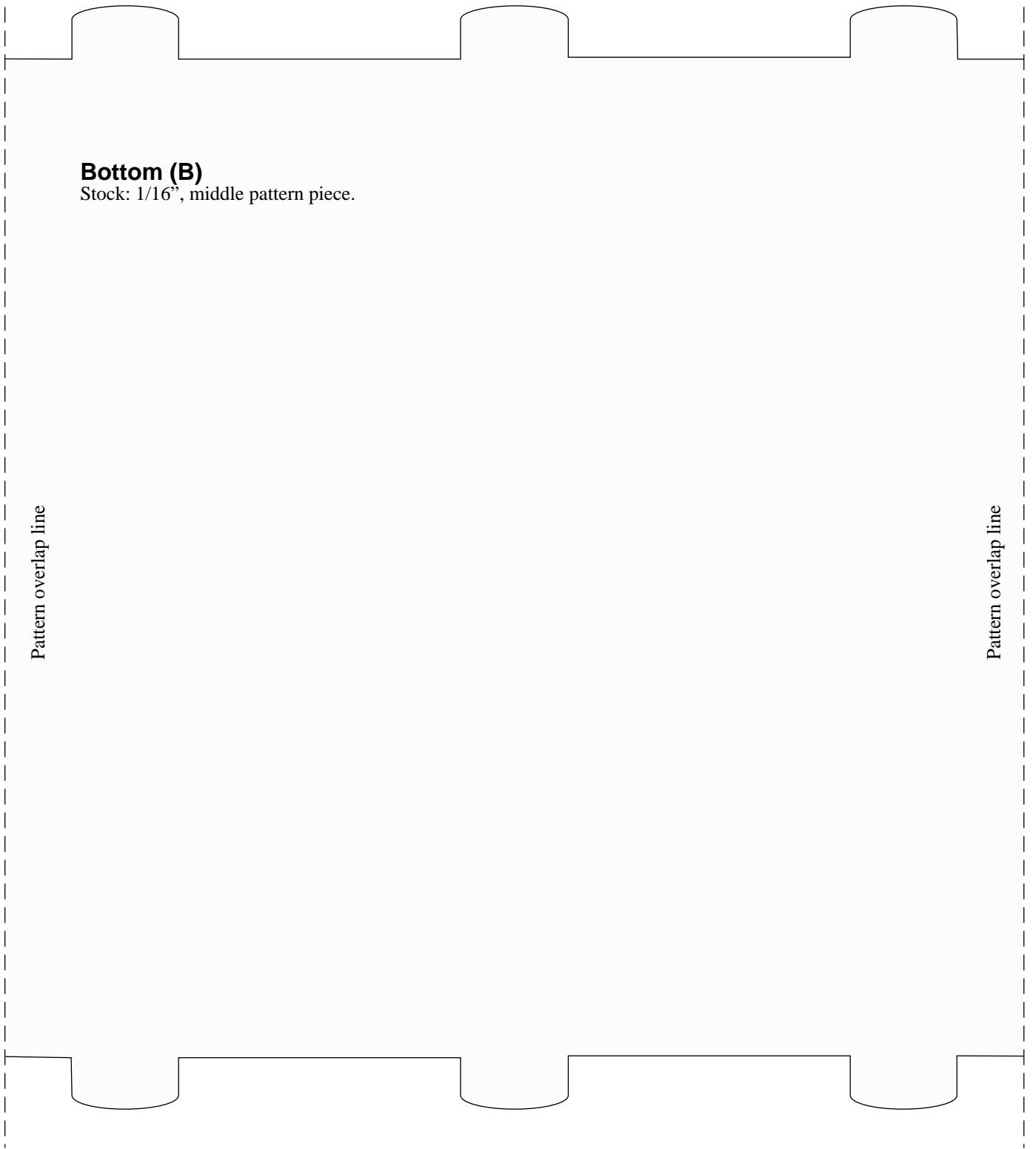
Pattern overlap line

#P509



**Bottom (B)**  
Stock: 1/16", left pattern piece.

Pattern overlap line



**Bottom (B)**

Stock: 1/16", middle pattern piece.

Pattern overlap line

Pattern overlap line

**Bottom (B)**

Stock: 1/16", right pattern piece.

Pattern overlap line

